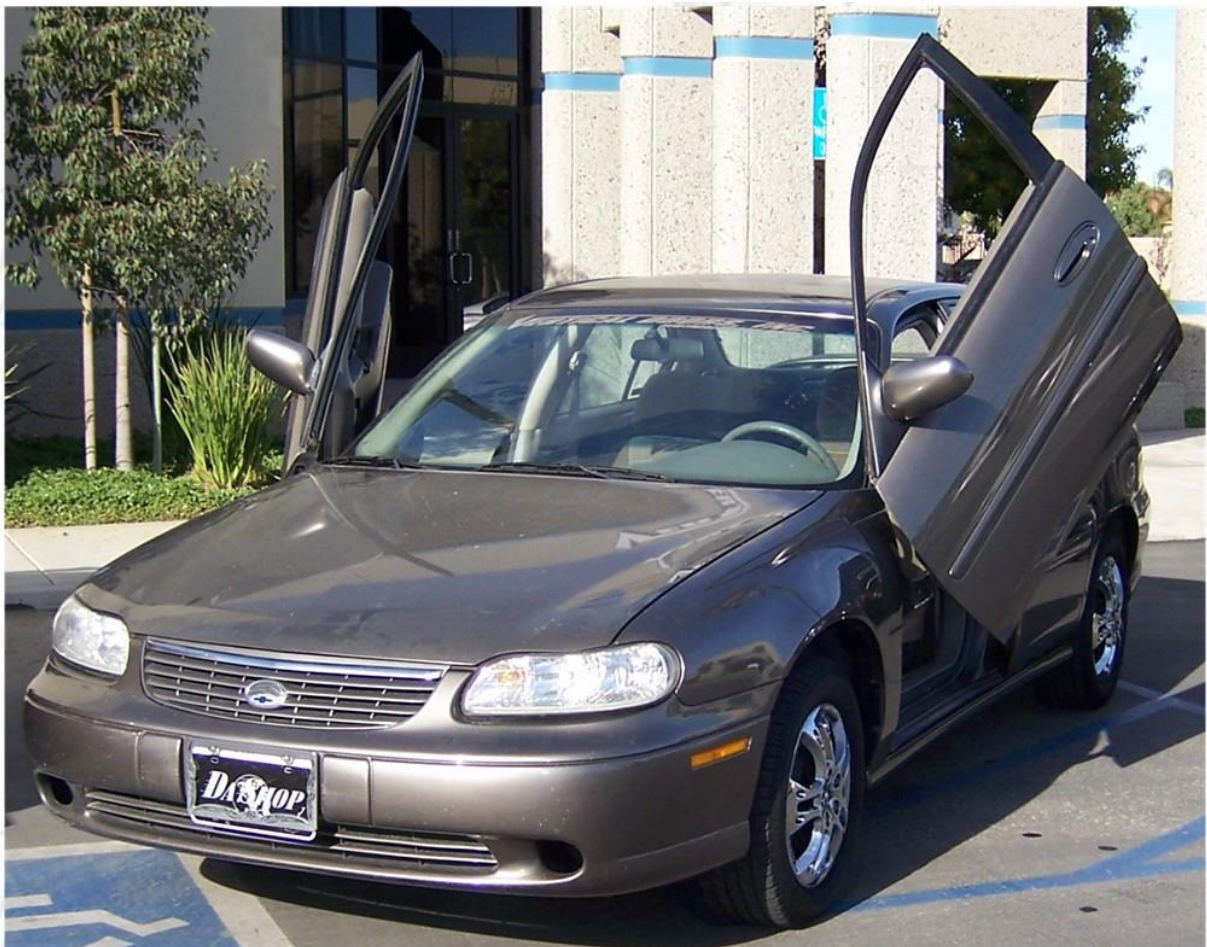




**SIMPLY UPLIFTING™**

542 3<sup>Rd</sup> Street, Lake Elsinore, CA 92530

**TEL: 951-245-8669, FAX: 951-245-5481**



**MALIBU, ALERO, CUTLASS 1997-2000  
GRAND AM 1999-2000 Pontiac G6 05-10**

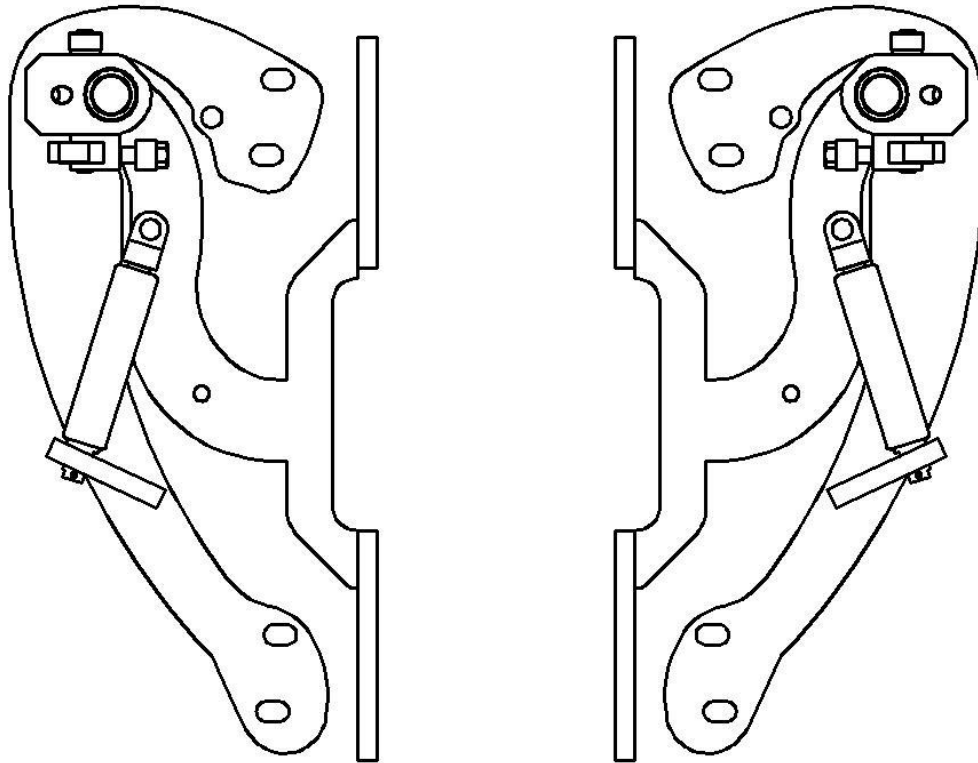
**U.S. PATENTS**

**#6,808,223; #6,845,547; #7,140,075; #7,059,655**

**PATENTS AGGRESSIVELY ENFORCED!**

**PLEASE CAREFULLY READ ALL INSTRUCTIONS BEFORE  
ATTEMPTING TO INSTALL THIS PRODUCT.**

**FOR QUESTIONS PLEASE  
CONTACT US AT (951) 245-8669**



**THIS KIT INCLUDES:**

➤ 16 M8-1.25X30MM BOLTS WITH WASHERS	➤ RIGHT AND LEFT HINGE ASSEMBLY
➤ 2 SHOCKS 505-510 PSI	➤ 2 SHOULDER BOLTS
➤ 2 PINS	

**TOOLS REQUIRED FOR INSTALLATION:**

	➤ AIR RACHET, GRINDER AND CUTTER.
	➤ 10MM, 13MM SOCKETS AND EXTENSION.
	➤ FORK AND PHILLIP'S SCREW DRIVERS
	➤ SPACERS FOR THE DOOR GAP.
	➤ 3/16 ALLEN WRENCH
	➤ 1/4 TORX BIT
	➤ 9/16 WRENCH
	➤ LOCKTITE RED

**(Note: The pictures on the manual are for reference only they may not match your vehicle.)**

1) Disconnect the battery.

*Note: Some of these models are equipped with THEFT-LOCK audio systems, see your manual or contact your dealer on how to disable it.*

2) Remove the door catch:

Open door completely and remove the fasteners securing the door catch. Later on we'll take the door panel off and remove the door catch.



3) Headlight housing removal.

Open the hood and remove the plastic pushpins securing the shield over the headlight housing.

Pull straight up on the two clips to release the headlight housing from the ball-studs on the body and disconnect the electrical connectors.

4) Remove the fender:

Remove the hood and the hood hinge bracket from the rear of the fender.



Remove all fasteners on wheel well.

*Note: if your vehicle is equipped with a skirt you will have to remove it.*





With the headlight removed you will have access to (2) 10mm bolts and (2) plastic clips this will allow you to pull on the bumper and release it from the fender.



Pull on the wheel well and remove the plastic or foam cover located by the factory hinges this will allow you to remove (1) 10mm bolt located by the factory hinges.

*Note: on Grand Am and Alero models, open the front door and remove the one fender bolt in the top of the door hinge area.*



Remove the (2) 10mm fender-to-body bolts from below the vehicle at the front rocker panel area.

Remove the mounting bolts along the upper edge of the fender and carefully remove the fender.

Remove the hold down bracket by removing (2) 10mm bolts.

Note: Do not discard you will need it later on in the installation.



### 5) How to gain wire slack:

Wire slack is needed for the new Vertical Door Inc. system to fully open. Wire slack will be gained from inside the door and if needed from inside the car.

#### Door panel removal:

You will have to remove the door panel to gain wire slack and to remove the door catch.

Remove the covers and the screws.

Note: on models with power windows use the fork to pry the control panel from the door and disconnect the wire harnesses.



Once all of the screws are removed, detach the trim panel from the door, working around the door with a plastic trim panel tool to disengage the clips, disconnect any electrical connectors and remove the trim panel from the vehicle by lifting it up and away from the door.

With the door panel off remove the speaker, inside the hole you will find a plastic clip that holds down the wires, remove the clip this will give you the needed wire slack.

**With the speaker removed reach in and remove the door catch.**

If wire slack is needed from inside the car typically you would remove the foot guard by pulling on it and the kick plate by removing a Phillip's screw. Once you have loosened the kick plate remove the plastic clips or zip ties holding the wires these will give you extra wire slack.

**6) Preparation for factory hinge removal:**

Close the door and use painter's tape to secure the door to the body, in preparation for factory hinge removal.

Use a 13mm wrench to remove the (6) bolts securing the factory hinges.

**Insert spacers after removing the factory hinges.**

*Hint\*(You can make your spacers out of paint sticks and about 8-10 turns of blue painters' tape)*

*Hint\* Use painter's tape to protect the edges of the fenders and the doors.*

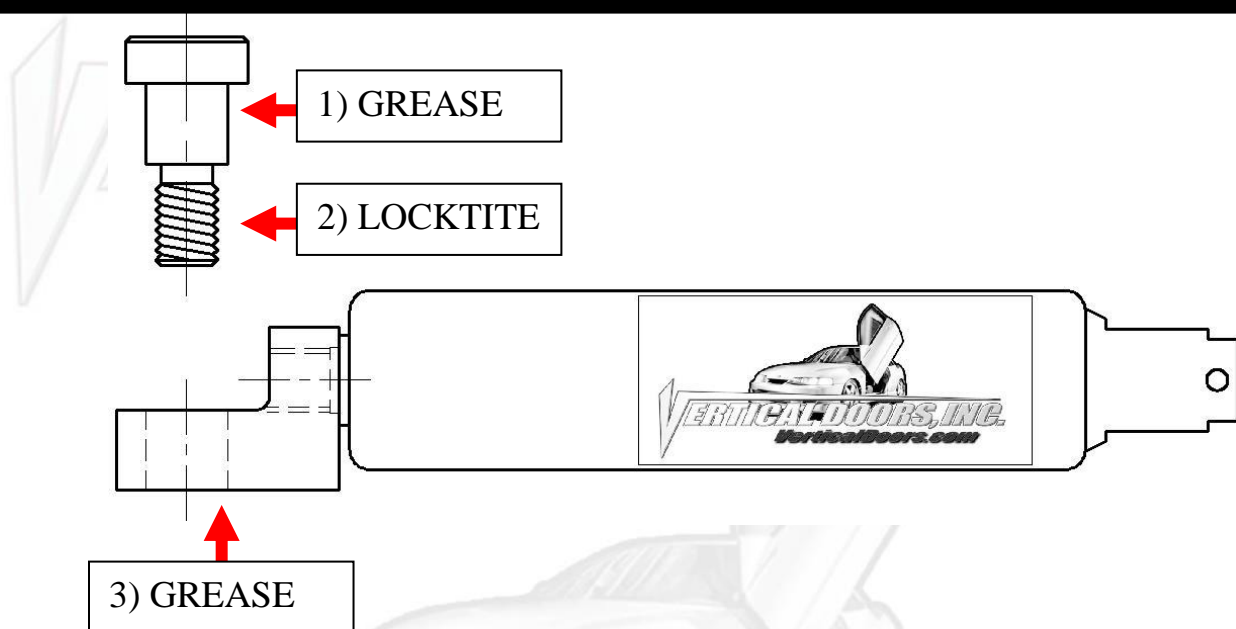
**7) Install your new Vertical Doors Inc. system:**



In order for the VDI system to sit flat on the apron you will have to bend or cut the (2) metal trim peaces showed on the picture.

After they have been flattened install the new VDI system.

*Hint\* Tighten the bolts on the door first then the bolts on the apron.*

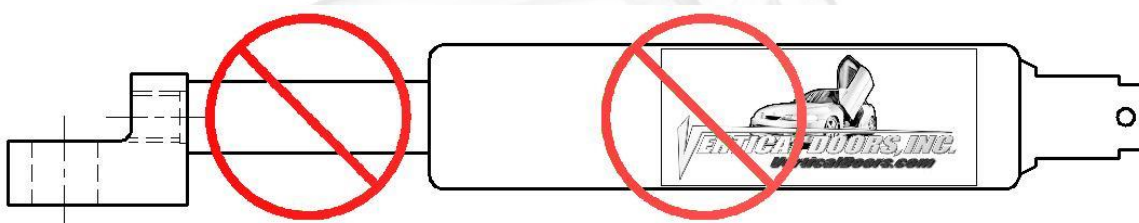


**\*IMPORTANT STEP: DO NOT SKIP THIS STEP. THIS STEP IS CRUCIAL IN YOUR INSTALLATION PROCESS, IF THIS STEP IS NOT COMPLETED WHEN INSTALLING THE VERTICAL DOOR KIT; ALL WARRANTIES ARE VOIDED, AND MAY CAUSE FUTURE PROBLEMS WITH YOUR VERTICAL DOOR SYSTEM.**

1<sup>ST</sup>, make sure you put grease on the body of shoulder bolt where the arrow is pointing.

2<sup>ND</sup>, make sure you put red Locktite, where the arrow is pointing, on thread of shoulder bolt.

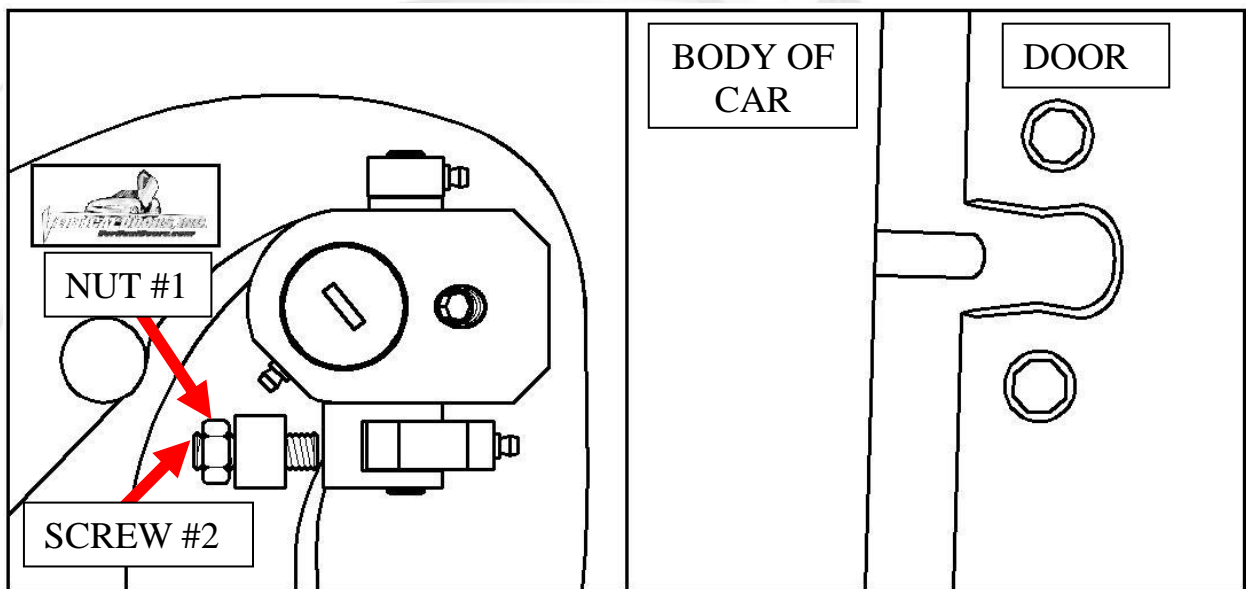
3<sup>RD</sup>, make sure you put grease on the bottom side of the shock end.



**WARNING! THE USE OF ANY TYPE PLYERS, PAINT OR FOREIGN MATERIALS ON THE SHOCK'S BODY OR SHAFT WILL VOID THE WARRANTY.**

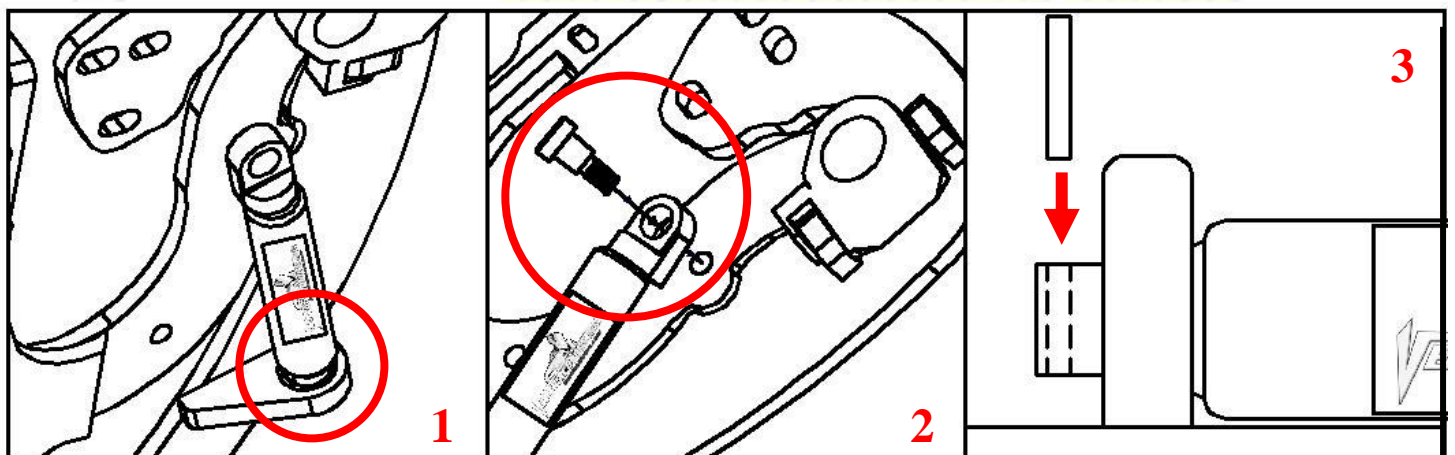


8) Once hinge is locked in place, break nut #1 then turn Allen set screw #2 on fig until it hits the block then open the door and continue to adjust until the door matches with the striker, open and close door making sure it closes like factory.



*Hint\**(leave #1 nut loose until shock is installed Allen set screw will have to be re-adjusted after shock is installed).

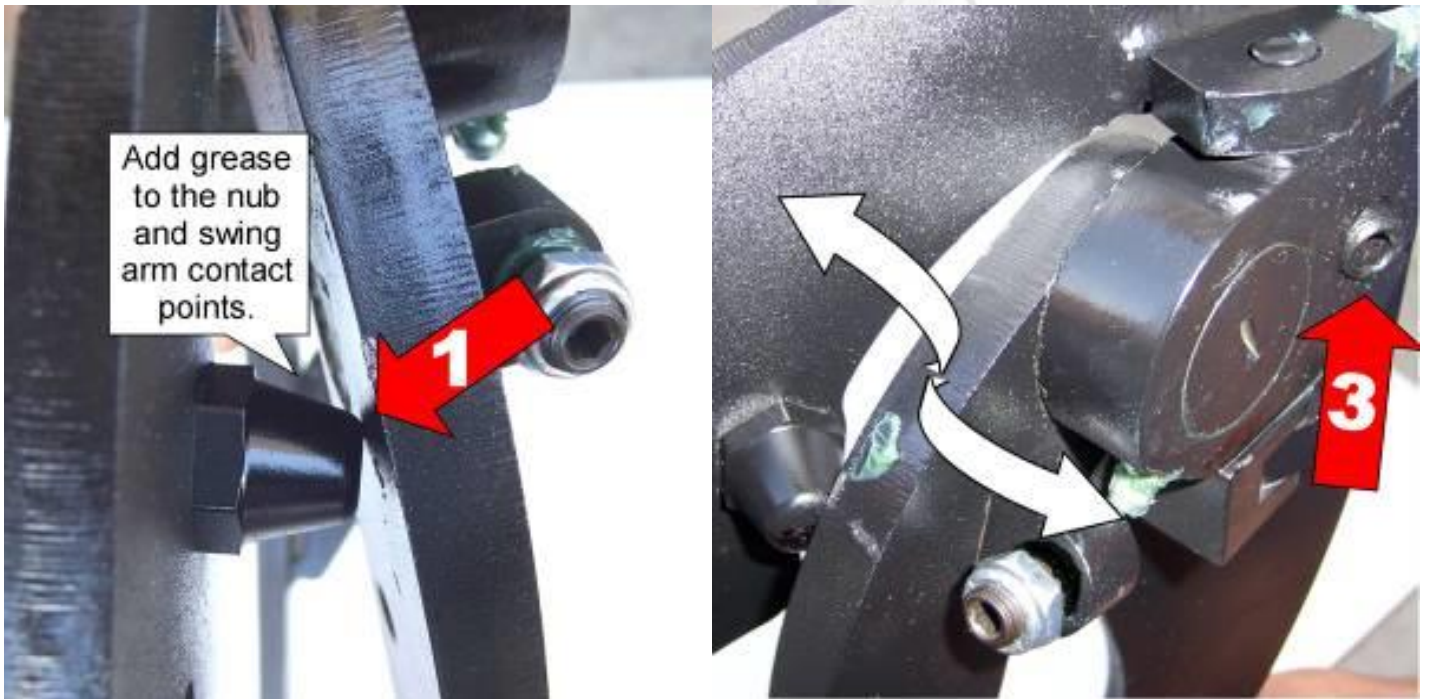
9) Install the shock.



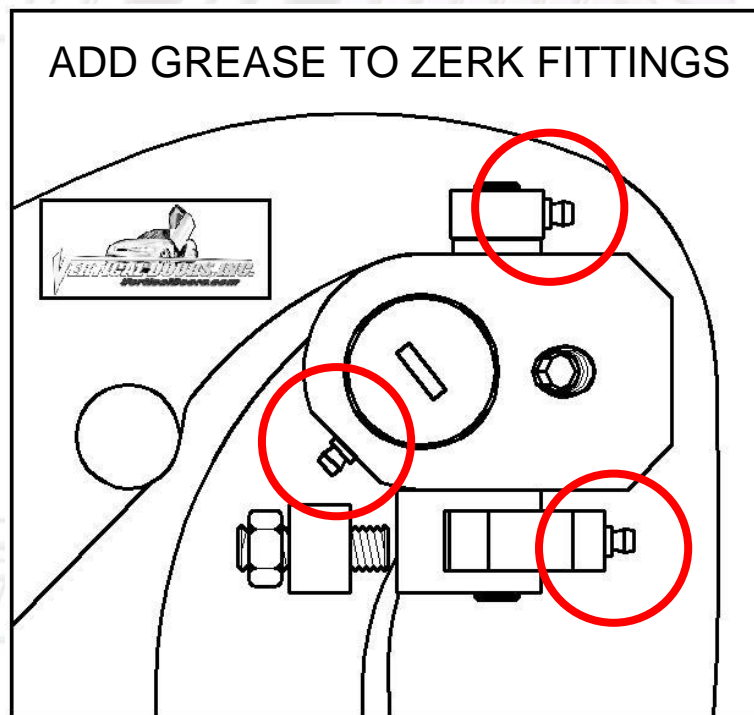
*Hint\** (You will need a helper to raise the door). (Slip the spherical rod mount into the spherical ball bearing (1). Using a 1/4 Allen wrench, tighten the screw into the swing arm (2). After the shock is installed secure it by installing the pin in the bottom shock end (3).



**10) Adjust door opening set screw #3 clockwise until distance between nub and swing arm is enough so that the swing arm moves up and down freely.**



*Hint\* (Fine tune the Allen Adjustment screw (#2) to realigned striker with door. After the door is align test door by opening and closing, lifting and lowering door several times.*



**Note: Do not install fender until the adjustment of the door is accurate, and the set screw is tightly secure. Also make sure everything is tight, adjustment is set and everything is Locktite.**

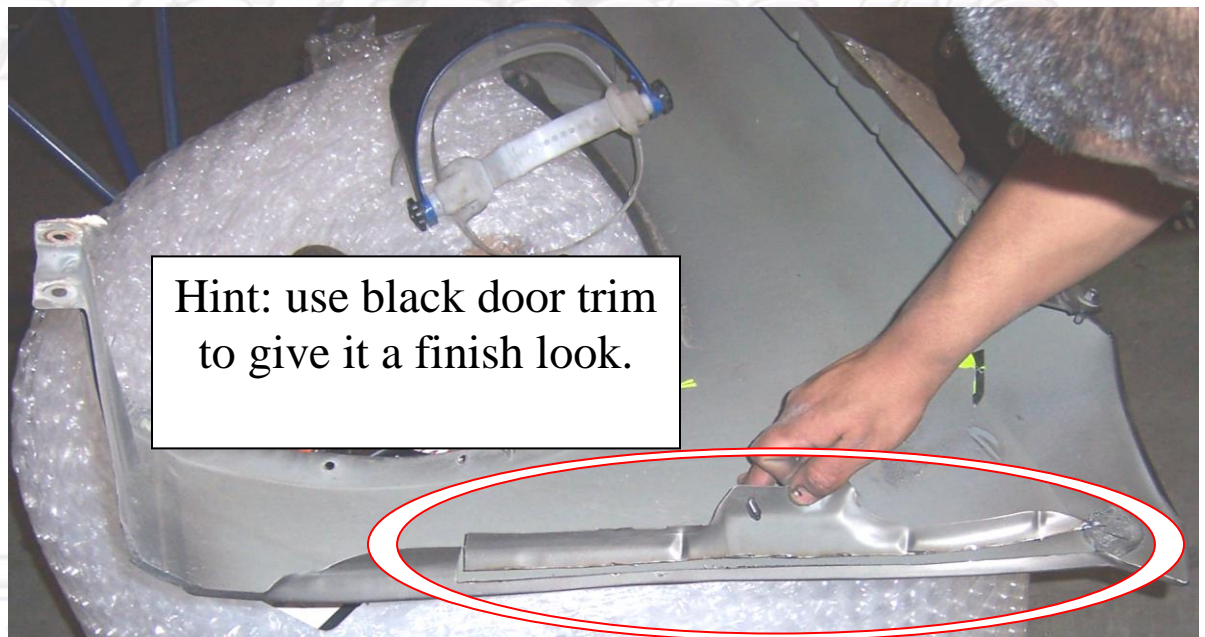
## 11) Modify wire layout:

After gaining the extra wire slack, you will need to cut the factory wire boot in half and add aftermarket wire loom to protect the exposed wires. Your wires should look like the picture on the right.



## 12) Modify fender:

You will have to cut the inner lip of the fender as showed. Use a grinder to remove any sharp edges.



13) Close the door and Replace the fender, by reversing step 4.

*Hint\*(Make sure the electrical wires don't get pinched enough to damage wires)*

14) Follow the same steps for the other side.



Thank you for the purchase of the:  
**CHEVROLET MALIBU**  
**1997-2000**

***VERTICAL DOORS INC. SYSTEM***

*Simply Uplifting*



**NOTE:**

Vertical Doors Inc. assumes no responsibility for any damages caused by improper installation